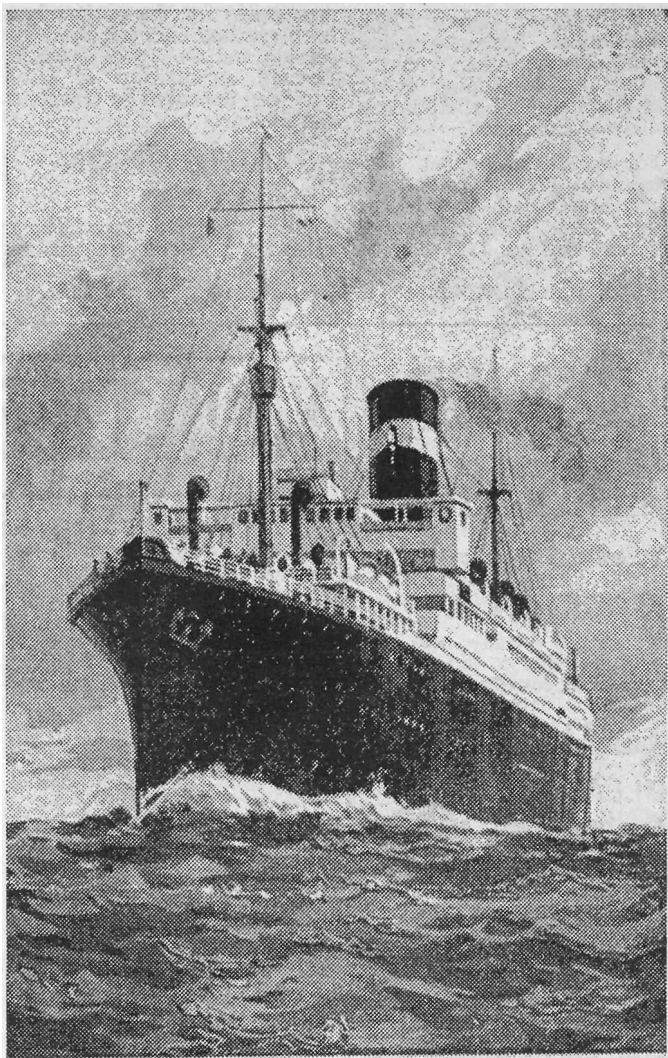


POSTCARD HISTORY



ANCHOR DONALDSON LINE THE "ATHENIA"

THIS IS a postcard of the Athenia. I worked on her in Glasgow as a ship's joiner the day before she sailed.

We put beds in every available space to accommodate the extra large number of American citizens wanting to get back home before the war started in 1939.

The Athenia was torpedoed off the Irish coast. That was on the first days of the war. There was a big loss of life.—John D. Oag, St Kitts, 9 Millbank Road, Thurso.