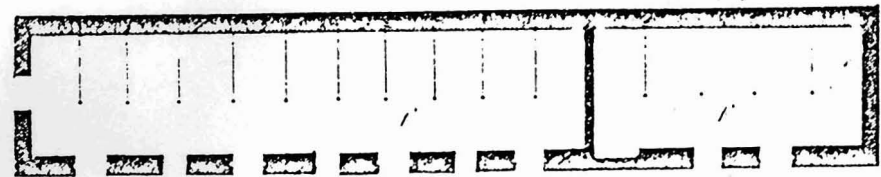
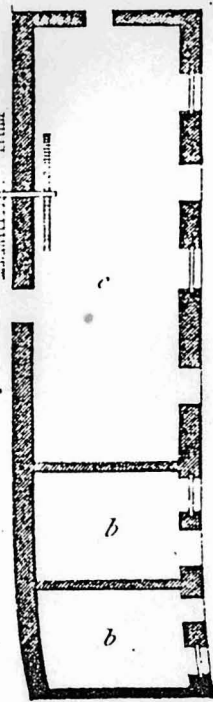
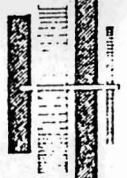
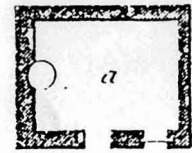


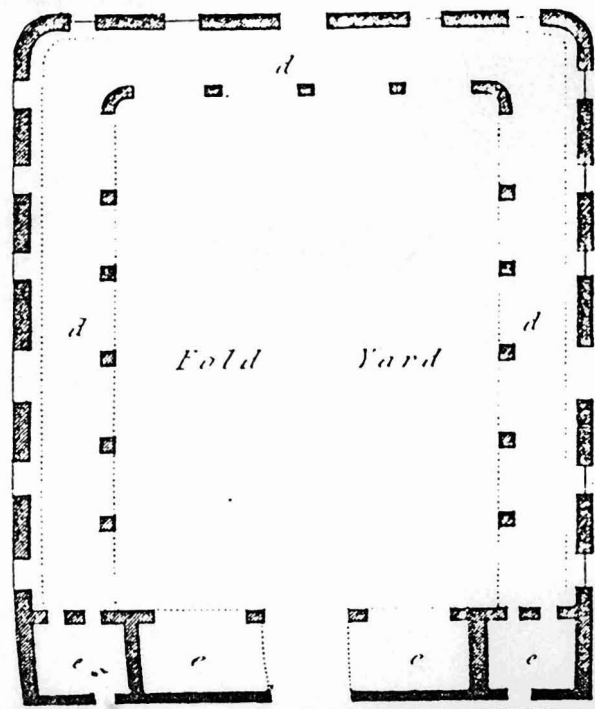
Plan & Elevation
of the
 FARM BUILDINGS.
Erected for the
 EARL GOWER
at Skelbo
 in 1811.



way for



Paved



way



Way

Paved

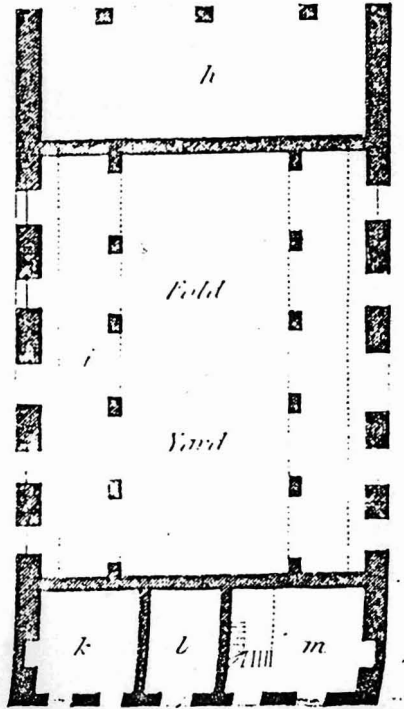


PLATE XIII.

PLAN and ELEVATION of *Farm Buildings*, erected Earl Gower, in 1811, by the Marquess of STAFF Skelbo in the parish of *Dornoch*, and county of *Suth*

This farm consisting of 320 acres, is in the occupation of Lord Gower.

REFERENCES.

- | | |
|--|-------------------------------|
| <i>a</i> Chaff-house. | <i>g</i> Byres. |
| <i>b</i> Corn-rooms. | <i>h</i> Cart-shed. |
| <i>c</i> Thrashing-mill (with water-wheel)
and straw-house. | <i>i</i> Cattle-shed. |
| <i>d</i> Cattle-sheds. | <i>k</i> Dairy. |
| <i>e</i> Poultry houses, and piggery. | <i>l</i> Meal-house. |
| <i>f</i> Stables. | <i>m</i> Bothy for ploughmen. |