

Nodder & Butler Leman
5

During the interval refreshments
can be obtained in the Community
Centre Canteen.

A warning bell will be rung in
the Community Centre 3 minutes
and 1 minute before the rise of
the curtain for each Act.

The Drama Group wish to thank
their friends who have loaned
furniture and who have helped
in many other ways with the
presentation of this play.

7P
248

GOD SAVE THE QUEEN
The Royal Loyal Society: The Philharmonia Orchestra
Sir Malcolm Sargent Conductor.

Your kind of Music Series 4.M.U.
E.M.I. Records Ltd. 45 r.p.m.

"OUT OF THE CROCODILE"

a comedy by

Giles Cooper

PRESENTED by BRORA COMMUNITY DRAMA GROUP

12th November, 1965

PRODUCED BY BRYAN E. WOOD

Programme - Price 6d.

SYNOPSIS OF SCENES

The action throughout takes place in the living room of the Hampsters' flat in London. Time: the present.

ACT I

Scene 1 - A morning in early summer.

Scene 2 - A few hours later.

INTERVAL OF TWENTY MINUTES

ACT II

Scene 1 - Immediately after the previous scene.

Scene 2 - The next morning.

No reference is intended in this play to any person, alive or dead.

CHARACTERS

HENRY HAMPSTER

HELEN HAMPSTER

PETER POUNCE

MONICA

JULIA

LESLIE HILL

NORMANA MACKINTOSH

HAMISH MENZIES

CHRISTINE BREBNER

MARIGOLD MACLEOD

BEHIND THE SCENES

STAGE DIRECTOR

STAGE MANAGER

ELECTRICIAN

PROPERTIES

CARPENTER

DECOR

FRONT OF HOUSE MANAGER

IRENE COATES

JOHN VIVIAN

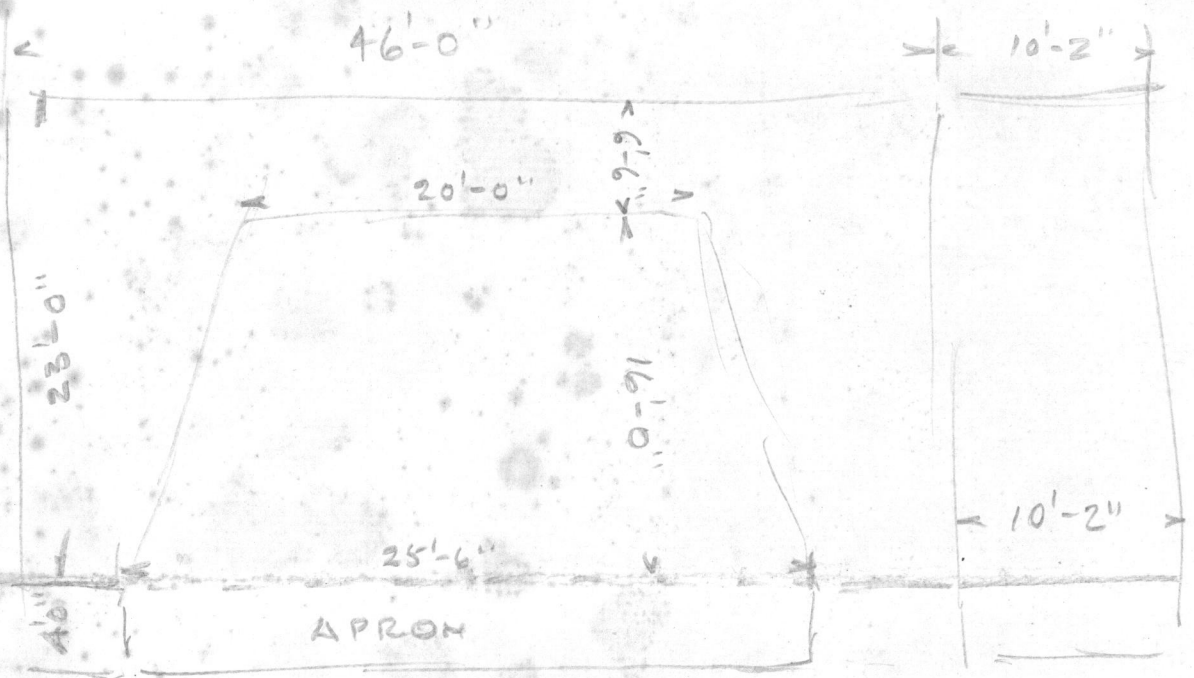
TOM TAYLOR

IAN SHAW

GEORGE COWIE

VICTOR ROSE

GEORGE SUTHERLAND



curtain rail short on O.P. side.
 2 full curtain short

Pres. Opening 26'-8"

Pres to Back Wall. 23'-4"

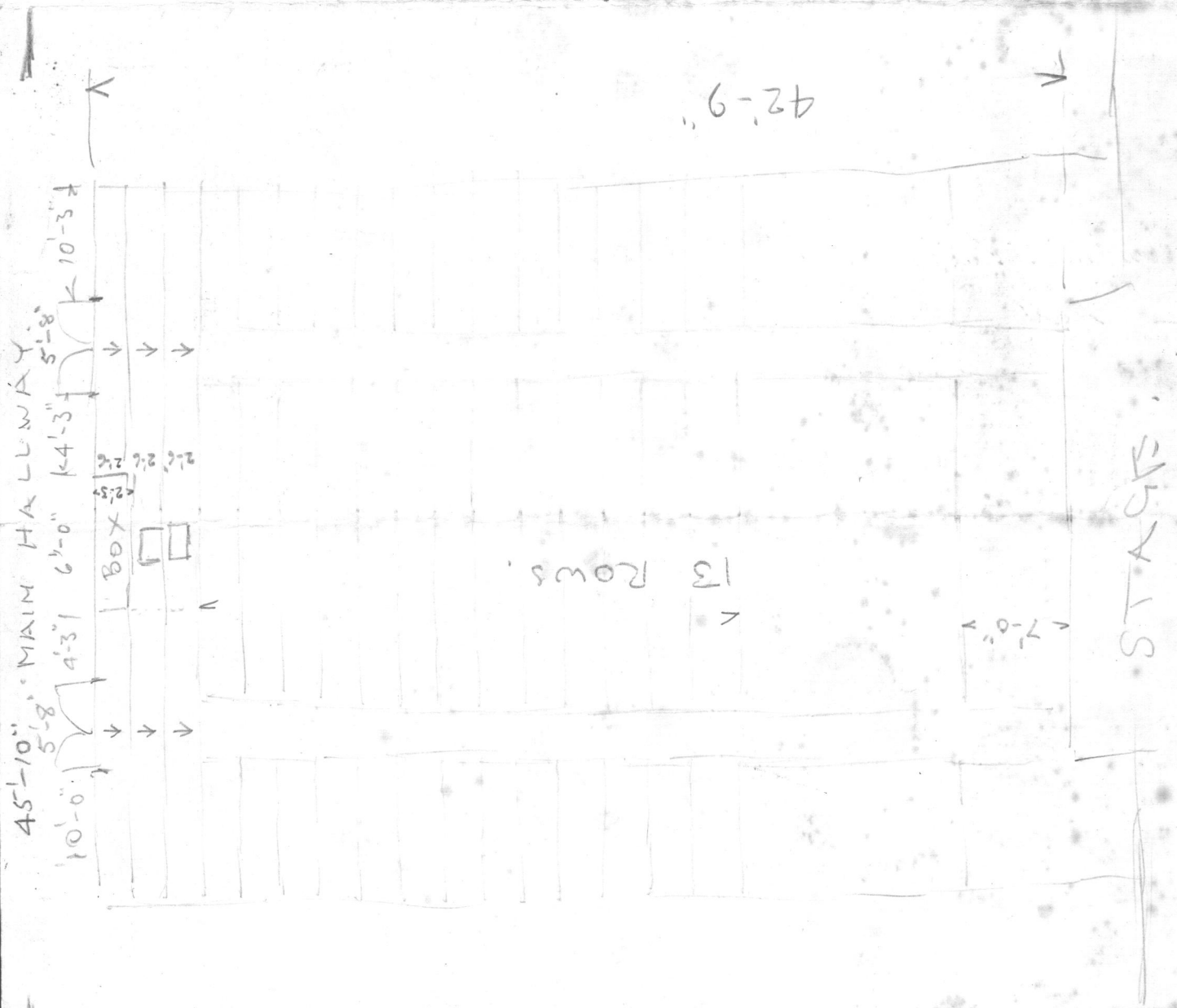
Size of Blot Ordered. 28'-0" x 20'-0"

28-0
26-8
1-4

Port seats (each side)

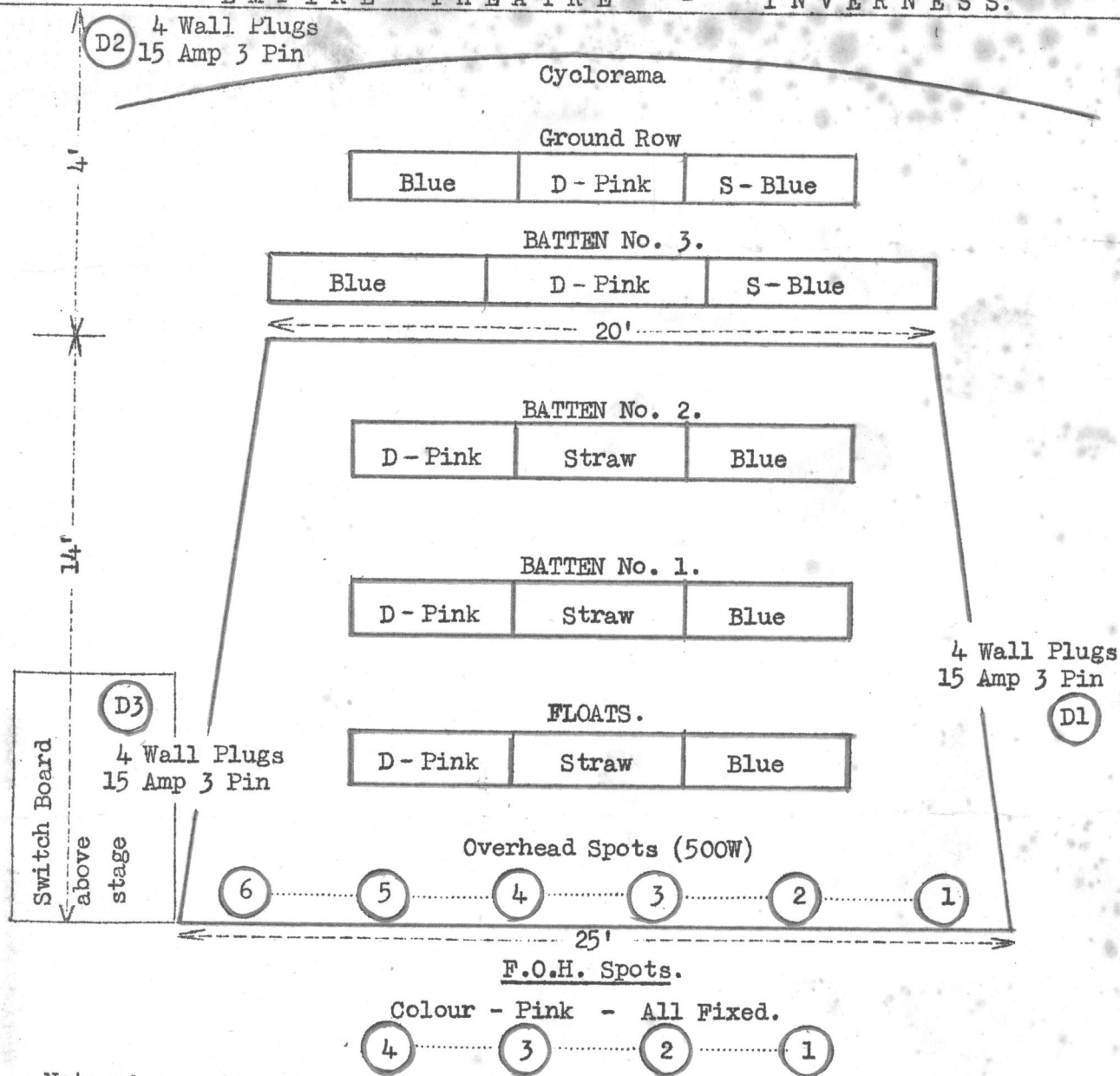
3, 3, 2, 2, 1, 1

22 11



SCOTTISH COMMUNITY DRAMA ASSOCIATION.

EMPIRE THEATRE - INVERNESS.



Notes:-

1. All Floats, Battens and Dips on Dimmers.
2. Ground Row on Dimmers.
3. Ten Spots, no more than six on Dimmers at one time, (four on switch).
4. Floods available on movable stands:-
2 Double Pageant Lamps (1000W) 2 Flood (500W)

LIGHTING PLOT.

CUES

INTENSITY

COLOURS

Opening

Floats

Battens 1.

2.

3.

Ground Row

Spots 1.

2.

3.

4.

5.

6.

F.O.H. 1.

2.

3.

4.

Plug connections
required -

Changes (if any)

1.

2.

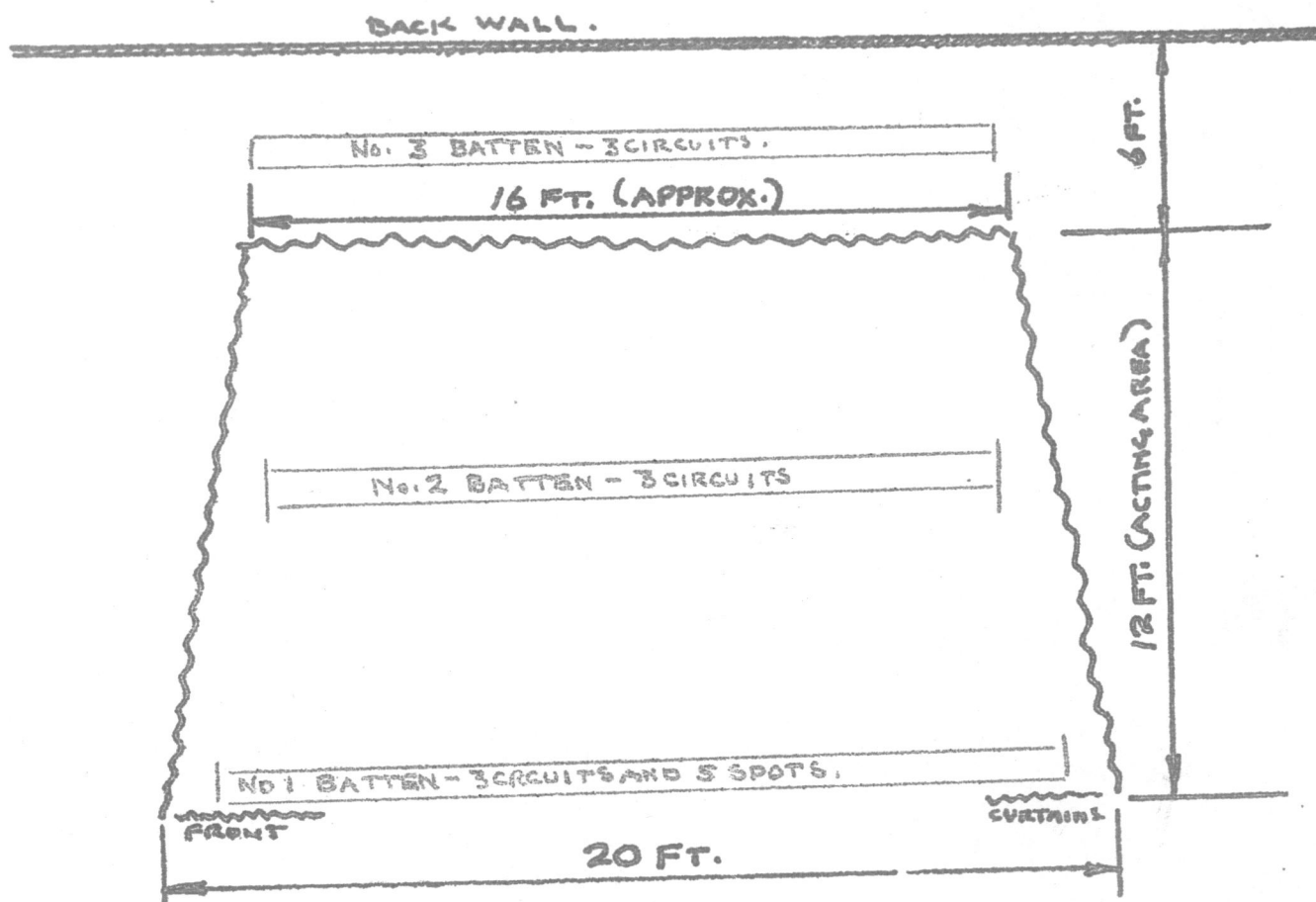
3.


Cenebex
Colour Filters.


184-9-6
84-2-3
100-7-3

100-7-3
8-6
92-19-3

LAIRG STAGE.



 F.O.H.
500W MIRROR SPOT

F.O.H. 
500W MIRROR SPOT

LIGHTING EQUIPMENT.

BATTENS:- 3 WITH 3 CIRCUITS IN EACH.
 SPOTS:- 2 @ 250W. 1 3 @ 500W.
 FLOATS:- 2 CIRCUITS.
 F.O.H.:- 2 @ 500W. MIRROR SPOTS (FIXED DIRECTION, COLOUR & FOCUS)
 FLOODS:- 4 @ 500W.
 DIMMERS:- 8
 STAGE PLUGS:- 2

STAGE DIRECTOR:- MR. JAS. MACLEOD, NEW BUILDINGS, LAIRG, PHONE LAIRG 98.

DOORS, WINDOW, FIREPLACE & SKYCLOTH ARE AVAILABLE IN ACCORDANCE WITH FESTIVAL RULE 14.

THE REHEARSAL TIME FOR YOUR CLUB IS NOW - - - - -

LIGHTING AND PROPERTY FORMS SHOULD NOW BE SENT TO MR. MACLEOD AT ABOVE ADDRESS INSTEAD OF MR. WOOD AS STATED ON FORMS.

BRORA HIGH SCHOOL

ASSEMBLY HALL STAGE

1. Particulars of Stage

(a) Dimensions:-

Width of proscenium opening: 23 ft.
Height of proscenium opening: 11 ft. 6 ins.
Depth of stage: 23 ft. (measured from setting line 1 ft. behind main curtain to back wall).
Depth of apron: 5 ft. (in front of main curtain).
Width of acting area: 23 ft. at front; 20 ft. at rear. Width from wall to wall: 30 ft.
Wing space 8 ft. 6 ins. each side. The stage is accessible from both sides and there is a passage way round the back of the stage.
It is possible to get from dressing rooms to each side of the stage during performances.
There are two doors on the back wall (see stage plan).
Height from stage floor to ceiling: 17 ft.
Height of stage from floor of hall: 3 ft.
Heights from stage to obstructions above stage:- light battens 13 ft. 6 ins.
Curtain tracks 14 ft. fixed borders 12 ft. and 11 ft.

(b) Equipment, Curtains, etc.

Two barrel battens are fitted one behind No. 1 border and one 2 ft. 6 ins. from back wall (Cyclorama).
Main tabs (front curtains) are of the draw type powered by a 3-speed electric motor controlled from stage left.
Borders and leg curtains are light fawn. Rear trailer curtains consist of six 8 ft. wide sections and are reversible, either light fawn or grey blue, and are mounted on banjo curtain track.
Cinema speaker (C.S. on plan) down-stage right is fitted with wheels and can be moved if necessary.
The stage floor is flat.

2. Lighting

The supply is 440 volts 3-phase A.C. and the maximum load 120 k.w.
The stage supply point is indicated as S.P. on plan.
The proscenium bar is equipped with three 6 ft. battens and four spots.
The four spots are on separate circuits and the battens have three circuits for red, blue and yellow.
There are 8 dips in 4 traps on four circuits.
The four front-of-house spots are on two circuits each controlling one right and one left.
Number 2 batten carries 12 floods and two spots.
Number 3 batten is 20-lamp, red, blue, yellow on three circuits.
Foot lights are 24 lamp, red, blue, yellow on three circuits. The foot lights can be removed and used as a cyclorama ground row by connecting to three circuit stage dips.
Four 500 w. wing floods on stands are available.
Record playing desk, microphone and amplifier (connected to built-in dual speakers) are on stage adjacent to dimmer board. Sound effects records are available.

3. General

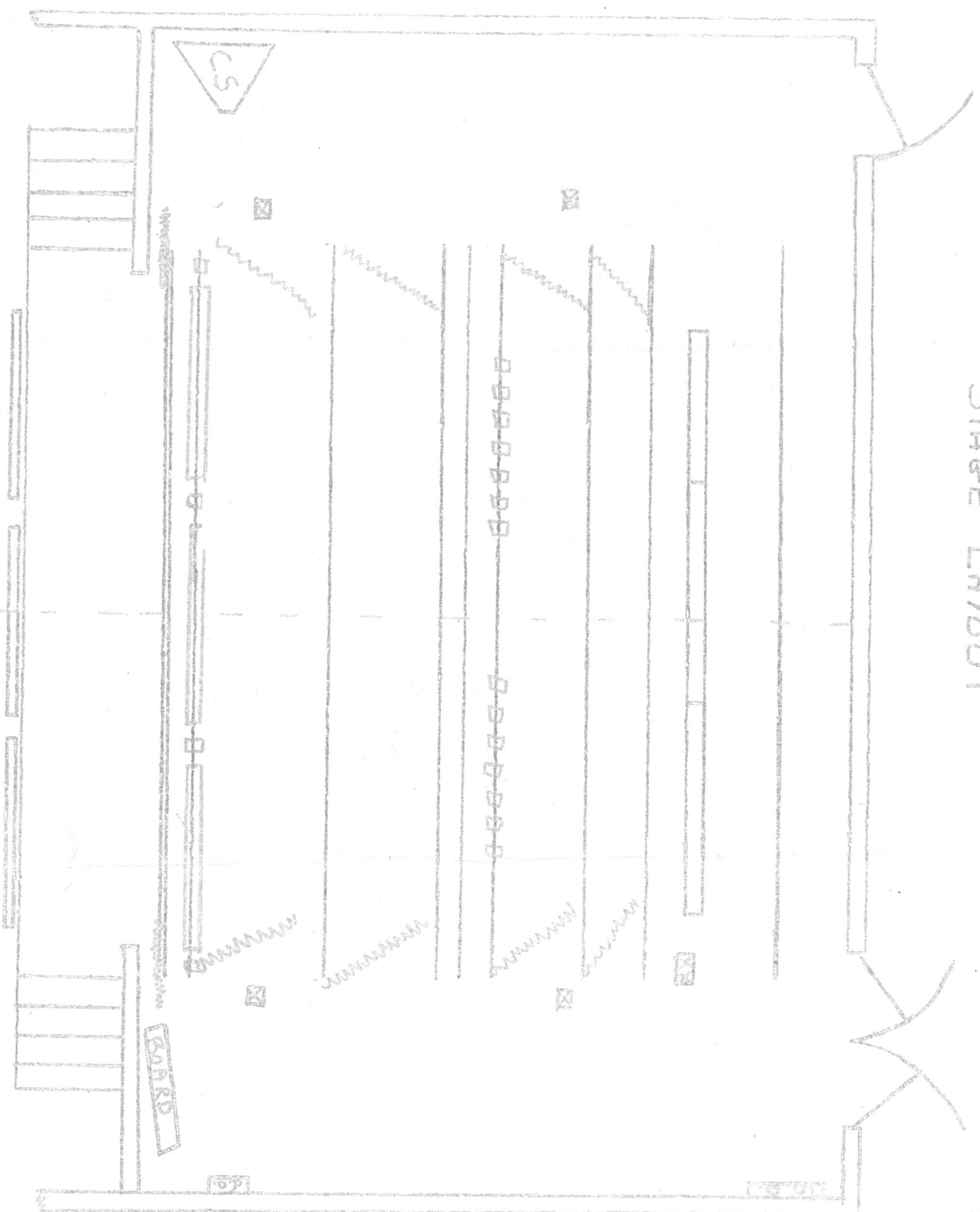
Access to front of stage can be obtained from a loading bank and emergency exit doors.
Access to rear of stage from an entrance at lower level via steps.

4. Dressing Rooms

Two dressing rooms each 15 ft. by 12 ft. situated immediately to the rear of the stage. Each room fitted with mirrors and four wash hand basins (hot and cold) but with no special make up lighting. Tables available. Lavatories and showers open off dressing rooms.

BROOK HIGH SCHOOL

STAGE LAYOUT



EQUIPMENT NOT SHOWN

4 x 500 WATT NING FLOODS ON STANDS

BARRER BATTEN - (BALL ON PULLEY)

CYCLO RAMP BATTEN

GROUND RAMP DIP

REAR TRANSVERSE CURTAINS

No 2 BORDER

No 1 BATTEN - 12 RODS + 2 SPOTS
BARRER BATTEN - (BALL ON PULLEY)
No 1 BORDER

FRONT TRAILER CURTAINS

STAGE DIPS
RD = RECORD PLAYER

No 1 BATTEN, 3x65ft. BATTENS + 4 SPOTS
PROSCENIUM BORDER
MAIN TRUSS

SCALE 1 inch to 5 FEET

FOOTLIGHTS

BEN/6/62

BRODA STAGE.

SCOTTISH COMMUNITY DRAMA ASSOCIATION

Notification re.....Festival

Dear Sir (or Madam),

Your Society will perform (play)
at in the (hall)
on 19..... The Festival commences at.....p.m.

Your team is on the programme which—at that session—will include
..... productions.

Your Team has been allotted a Rehearsal Period to test the acoustics of the Hall, the stage facilities and lighting plant, on from to

Yours faithfully,

District Secretary.

INFORMATION FOR PRODUCERS

The Stage Director is.....

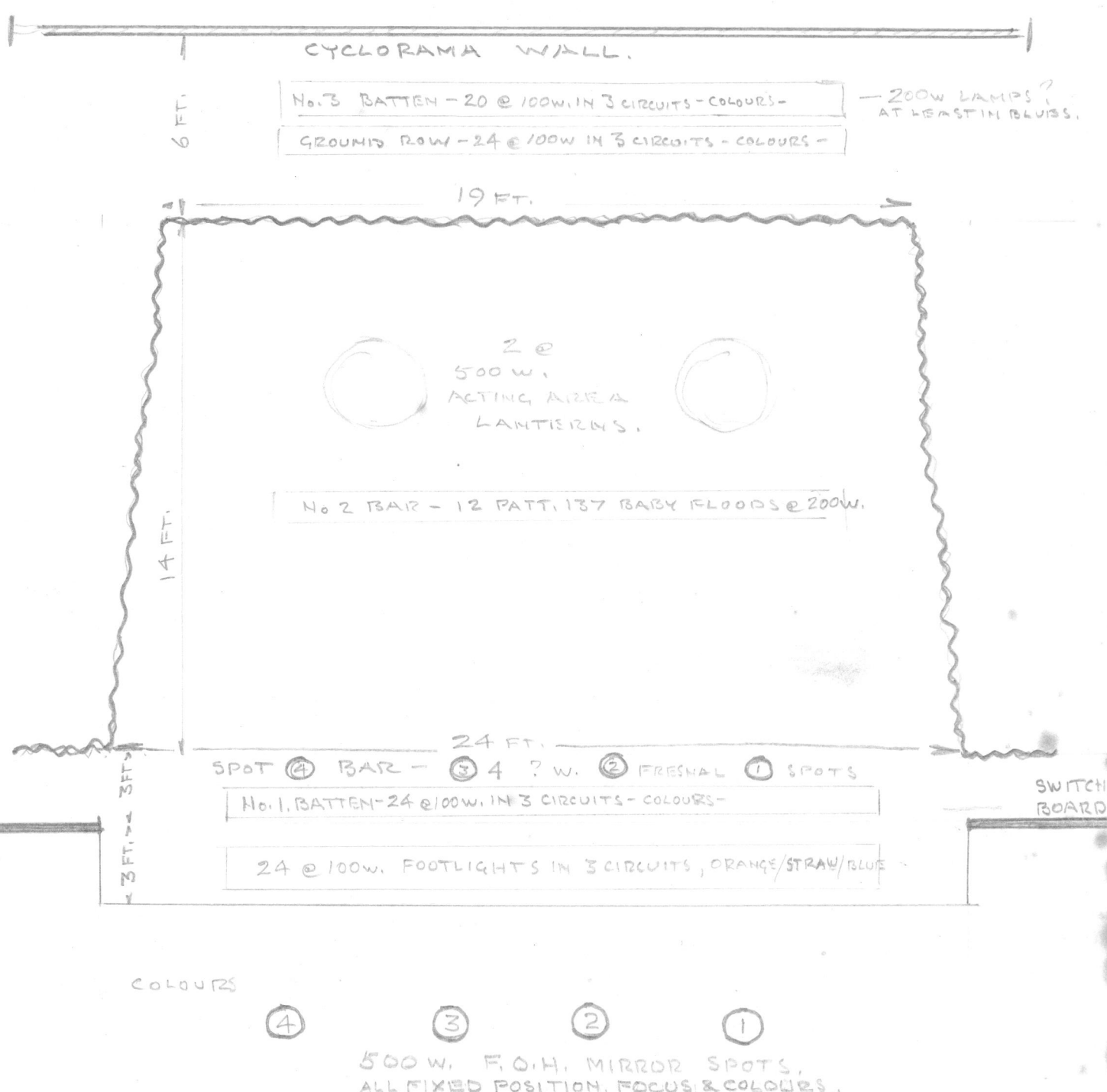
SIZE OF STAGE: Width of proscenium opening 23 FT. (20 FT. @ BACK CURTAINS)
Depth of stage available 14 FT (TO BACK CURTAINS) + 9 FT TO CYC. WALL.
Maximum height for flats 12 FT.
LIGHTING: Number of Battens 3
No. of circuits in Battens 3 IN EACH
No. of circuits in Floats 3
Number of Dimmers 22
Number of Plugs round Stage 8
Spots available 4 F.O.H. ; 4 ON NO 1 BATT. ; 2 ON NO.2 BATT.
Floods available 4 @ 500W. ON STANDS.

Special requirements (if any) of Local Authority:—

Other information:—

BRODA SCHOOL HALL.

PASSAGE WAY TO DRESSING ROOMS.



COLOURS
PORTABLE FLOODS } - 4 PATT. 60 WIDE ANGLE 500W. FLOODS.
WITH STANDS

PLEASE INDICATE

- 1) POSITION OF 4 - TWO WAY STAGE DIPS
- 2) 4 - SINGLE WAY " " EACH OF
- 3) CINEMOID COLOURS WHICH HAVE BEEN SUPPLIED WITH THE ABOVE EQUIPMENT
- 4) WATTAGE OF SPOTS IN SPOT BAR.

NOTES.

1. ALL FLOATS, BATTENS & DIPS ON DIMMERS
2. GROUND ROW ON DIMMERS.
3. 8 SPOTS ON INDIVIDUAL DIMMERS.
4. FLOODS ON MOVEABLE STANDS USED FROM STAGE DIPS AND ALL ON DIMMERS.

BZORA,

24" wide base.

23'-0" deep.

Placing depth 14'-0"

Width 19'-0"

Front line - - about 3'-0" in from
base wall.

DORNOCH ACADEMY

ASSEMBLY HALL & STAGE

STAGE DIMENSIONS

Total width of Stage & Wings	46 ft.
Depth of Stage (Pros. wall to Cyc. wall)	23 ft.
Total Height of Stage (Stage Floor to Grid)	23 ft.
Width of Scene Bay	10 ft.
Depth of Scene Bay	23 ft.
Height of Scene Bay	9 ft.
Width of Proscenium Opening	25 ft.
Height of Proscenium Opening	11 ft. 8 ins.

ACTING AREA WITHIN CURTAINS

Width at Front	25 ft.
Width at Back Curtains	20 ft.
Acting Depth (measured 2 ft. inside Front Curtains to Back Curtains)	14 ft.
" " (Measured 2 ft. inside front curtains to cyc.wall)	21 ft.

APRON STAGE

Depth (in front of front curtains)	4 ft.
Width	26 ft.
Height from Auditorium Floor	3 ft. 4 ins.

CURTAINS

- Proscenium Curtains (Main Tabs) Draw Type on Hall Track operated by manual winch in Prompt. corner.
- Traverse Curtains (Trailers) Draw type on Hall Track operated by hauling rope on Prompt. side.
Colour - Light Grey. 8 ft. back from House Curtains.
- Stage Drapes - Single "Leg" Curtains running on curtain rail on wooden frame - length 15 ft., colour light grey. Also 5 "half curtains", on curtain rail on wood frame (Bottom of curtains 7' 0" above stage floor to close in above doors, windows etc.) Colour Light Grey.
- Borders - Suspended on sets of lines from light weight barrel.
Height from stage floor is adjustable.

LIGHTING

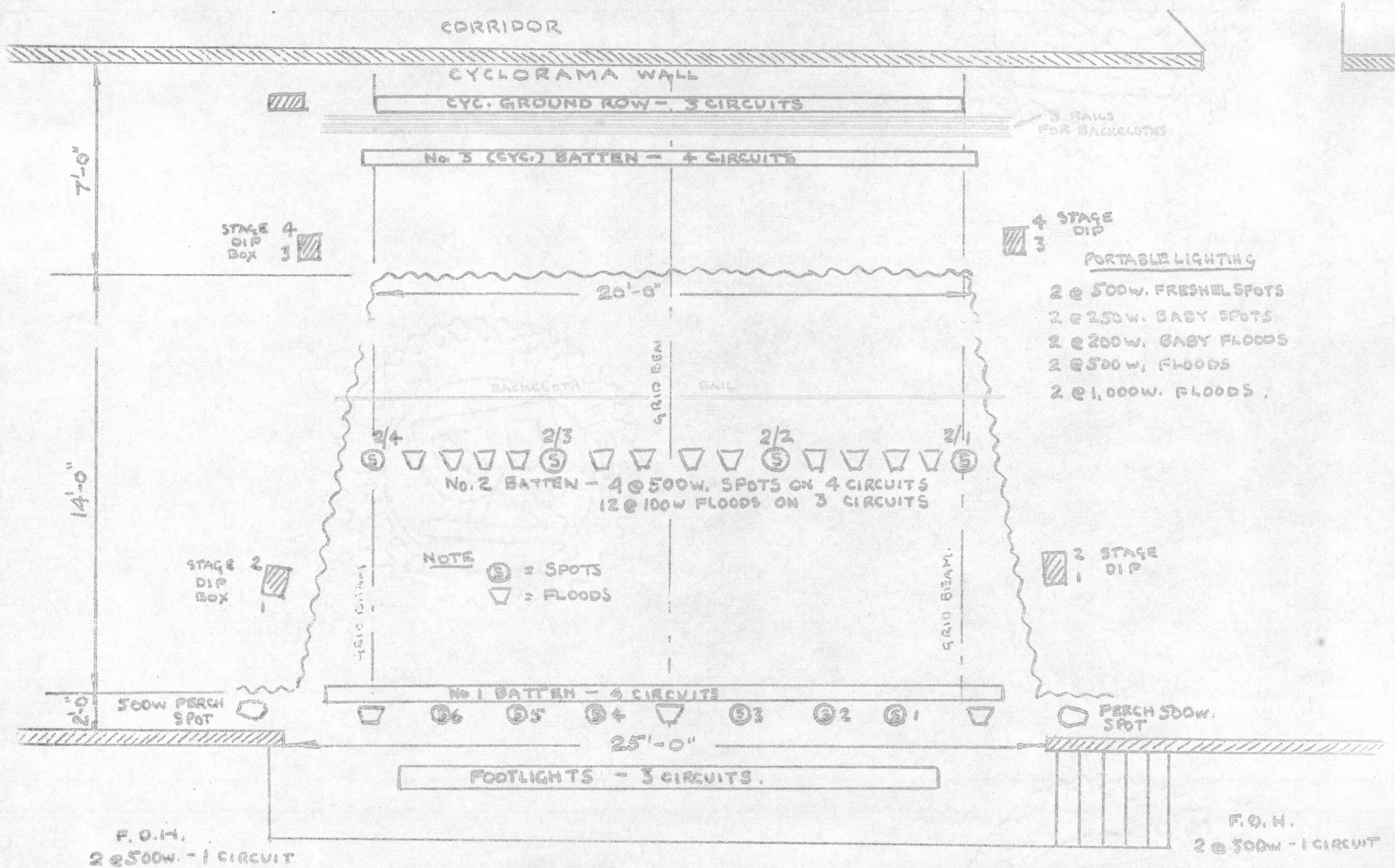
- The supply is 440 v. 3 - Phase A.C. - maximum load 40.5 K.W.
- Stage Dips - 2 boxes on each side of stage with 2 sockets on
1 circuit in each box - Total 8 sockets on 4 circuits.
- Switchboard - 36-way strand saturable Reactor Board situated at rear of auditorium with telephone and cue board communication to stage.
- F.O.H. - 4 @ 500 W. Mirror Spots - 2 each side of Auditorium connected in pairs to two circuits.
- No. 1 Spot Bar (7 circuits) - 6 Patt. 123, 500W. Fresnel Mirror Spots -
3 Patt. 137, 150W Floods in 1 circuit.
- No. 1 Batten - 18 ft. "S" type batten in 4 circuits (2 blue, 1 blue-green,
1 deep gold amber).
- No. 2 Batten - 12 100w. Med. angle floods in 4 circuits of 3 floods per
circuit.
2 500w. Fresnel spots on individual circuits.
2 500w. Mirror spots on individual circuits.
- No. 3 (Cyclorama) Batten 24 ft. "S" type batten in 4 circuits (2 blue,
1 blue-green, 1 deep gold amber).
- Cyclorama Groundrow 3 @ 6 ft. lengths "S" type groundrow in 3 circuits
(blue, blue-green, deep gold amber)
- Perch Spots 2 @ 500 w. Fresnel Spots on swivel arm brackets - individual
circuits.
- Footlights - 18 ft. "S" type in 3 circuits (blue, blue-green, deep gold
amber).
- Portable/

Portable Lighting (For use from Stage Dip Boxes)

2	500w	Fresnel Spots	} 8 Telescopic Stands.
2	250w	Junior Spots	
2	200w	Medium Angle Floods	
2	500w	Medium Angle Floods	
2	1000w	Wing Floods	

GENERAL

- Dressing Rooms:** Two Dressing Rooms, one 35ft x 10ft and one 16 ft x 13 ft., are situated to the rear of the stage. Each room is fitted with mirrors and wash hand basins. Tables are available. Lavatories and showers open off dressing rooms.
- Stage Door** Access to rear of stage is obtained from the west gate, past the end of the school. A large car park is available.
- Communication:** A corridor behind the stage gives access from both dressing rooms to both sides of the stage. A corridor gives access from dressing rooms and stage to front of house and to switchboard room.
- Auditorium** Seating capacity 350 on raked floor and 3 raised platform steps.
- House Lights:** On Dimmer at Switch Board.
- Sound Effects:** Power sockets available on stage and at switchboard for Record Player and Microphone (with amplifier on stage) connected to built-in dual speakers on Auditorium side of Proscenium Wall. Some sound effect records are available.
- Backcloths:** Three rails immediately in front of cyclorama wall and one rail 5 ft. behind trailer curtains. Each rail is suspended from a set of lines operated from the prompt side Fly Gallery. Backcloths should have wood rail with ties at top and wood rail at bottom.
- Working Lights:** Operated from switches on each end of cyclorama wall immediately inside doors.
- Flats:** A number of stage braces and weights are available. Flats should have two large screw eyes in back of frame. Any size of flat between 7 ft. and 16 ft. can be used.
- Car Parks:** Two car parks at the east end of the school are available for the public.
- Ticket Office:** A Ticket Office faces the main entrance.



DORNOCH ACADEMY

LIST OF TYPES OF LAMPS FOR STAGE EQUIPMENT

500w. Spots - Patt 23 - Class T1
500w. Spots - Patt 23S - Class T1
500w. Spots - Patt 123 - Class T1
250w. Spots - Patt 45 - Class T3
150w. E.S. In Baby Flood 137
150w. E.S. In Batten ("S" Type)
150w. E.S. In Groundrow & Foots
200w. E.S. In Stage Portable Flood
500w. G.E.S. Lamps for Pattern 60 Portable Floods
1,000w. G.E.S. for Back Stage Pattern 49 Floods.

250V	500W	CLASS T1
250V	250W	CLASS T3
250V	150W	E.S.
250V	200W	E.S.
250V	500W	G.E.S.
250V	1,000W	G.E.S.

STOCK 2 @ 250V 500W CLASS T1
1 @ 250V 150W E.S.

Regret cannot send in duplicate - forms in short supply.

SCOTTISH COMMUNITY DRAMA ASSOCIATION

ENTRY FORM FOR FESTIVAL - 1962

Section

1.

This Form IN DUPLICATE to be in the hands of the DIVISIONAL SECRETARY
not later than SATURDAY, 4th. NOVEMBER, 1961

Full Title of Club entering..... "A" "B" "C"

(If more than one Team is entered by a Club, designate as Team "A", Team "B" etc., and enter a separate Form in duplicate for each Team)

Is the entry in (i) Class "A"?.....(ii) Class "B"?.....
(iii) Class "C"?.....

Name of Secretary.....(Mr., Mrs., Miss)

Address.....

On behalf of the above-named Club, I, the undersigned Secretary, agree to adhere to all the Rules of the Festival, a copy of which is in my possession, and I undertake-

- (a) That the team consists wholly of amateurs, as defined in Rule No.1.
(b) That the Play is licensed by the Lord Chamberlain.
(c) That the author's permission to perform it will have been obtained by me.
(d) That the author's royalty will be paid by me and the royalty receipt sent to the Divisional Secretary before the performance.
(e) That the licence fee for reproduction of gramophone records (if any) will be paid by me before the performance.

I enclose 5/- in payment of Entry Fee.

* " 42/- " " Membership Subscription to S.C.D.A. (1961-62)
 *(Delete as required) (if not already paid)

(Signed)

(Date)

Please complete the following:

1. Full Title of Club, (as above in Section 1).....
2. Class of entry, Class "A" Class "B" Class "C"
(Delete as necessary)
3. Name and address of Club's Secretary.....
4. District.....

Date.....

SCOTTISH COMMUNITY DRAMA ASSOCIATION
PARTICULARS OF ENTRY FOR FESTIVAL - 1962

PARTICULARS OF ENTRY FOR FESTIVAL - 1962
 This Form IN DUPLICATE to be in the hands of the DIVISIONAL SECRETARY
 not later than SATURDAY, 25th. NOVEMBER, 1961

ACCOMPANIED BY A COPY OF THE PLAY TO BE PERFORMED

Full Title of Club entering..... Team "A" Team "B"

(If more than one Team is entered by a Club, designate as Team "A", Team "B" etc., and enter a separate Form in Duplicate for each Team)

Secretary

Producer

Name
(Mr., Mrs., Miss)

Address

Tel. No.

Title of Play to be produced.....

Author's Name.....

Type of Play: e.g., Scots, English, etc.,
Tragedy, Drama, Comedy, Farce, or Fantasy.....

Period of Play.....Scene of Play.....

Approximate duration of Play.....minutes.

Is it an original play?.....

(i.e. a Play which has not been performed prior to 1st, October, 1961)

Section

2