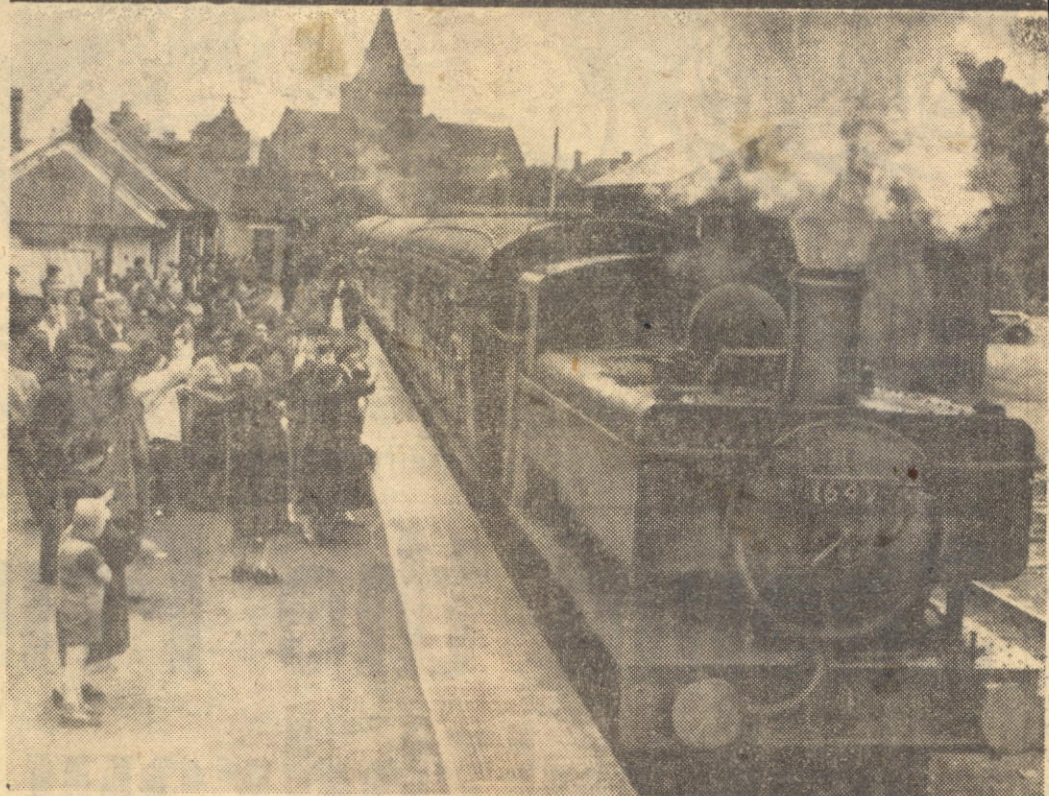


FAREWELL TO OLD FRIEND



HALF of Dornoch turned out yesterday to bid farewell to an old friend—the little train which links the town with the main line.

Normally there is only one coach, but for this trip two extra coaches had been added and about 200 people piled aboard for the final seven-and-three-quarter-mile journey to the Mound.

Sitting quietly among the happy, laughing crowd were four women who remembered the rainy day in June, 1902 when they travelled in the first train.

Said 88-year-old Mrs. Mary Ann Bridgeford, who worked for 20 years in the station ticket office: "It's like saying goodbye to an old friend."

Mrs. Willina Macdonald, who is 84, commented: "It's the price of progress."

The other two were: Mrs. Mary Macleod (64) and Miss Lilah Mackintosh (63).

